

2025

PORSCHE

**MOTORSPORT
CUSTOMER RACING
NORTH AMERICA**

OFFICIAL PARTNER



Road Atlanta
Driver Briefing

Circuit Specific Items

- Places to easily stash cars:
 - T5- Gate to remain closed, but with Safety Truck at location
 - T7 - Gate to remain closed, but with Safety Truck at location
 - D/R back straight, multiple cuts to BACK IN TO
- Blind nature – stay predictable
- If liberated from or driving through gravel, clean OFF-LINE

Qualifying

- Keep the pace UP on in laps

Pre-Race

- According to mXm
- Grid in Pit Lane : 2x2 (approx. 5 minutes)
- **(2)** Formation Laps (Advised to stay off curbs!)
- If permitted, Cars may retake their position up to: **T7**, Second formation lap

Race Start

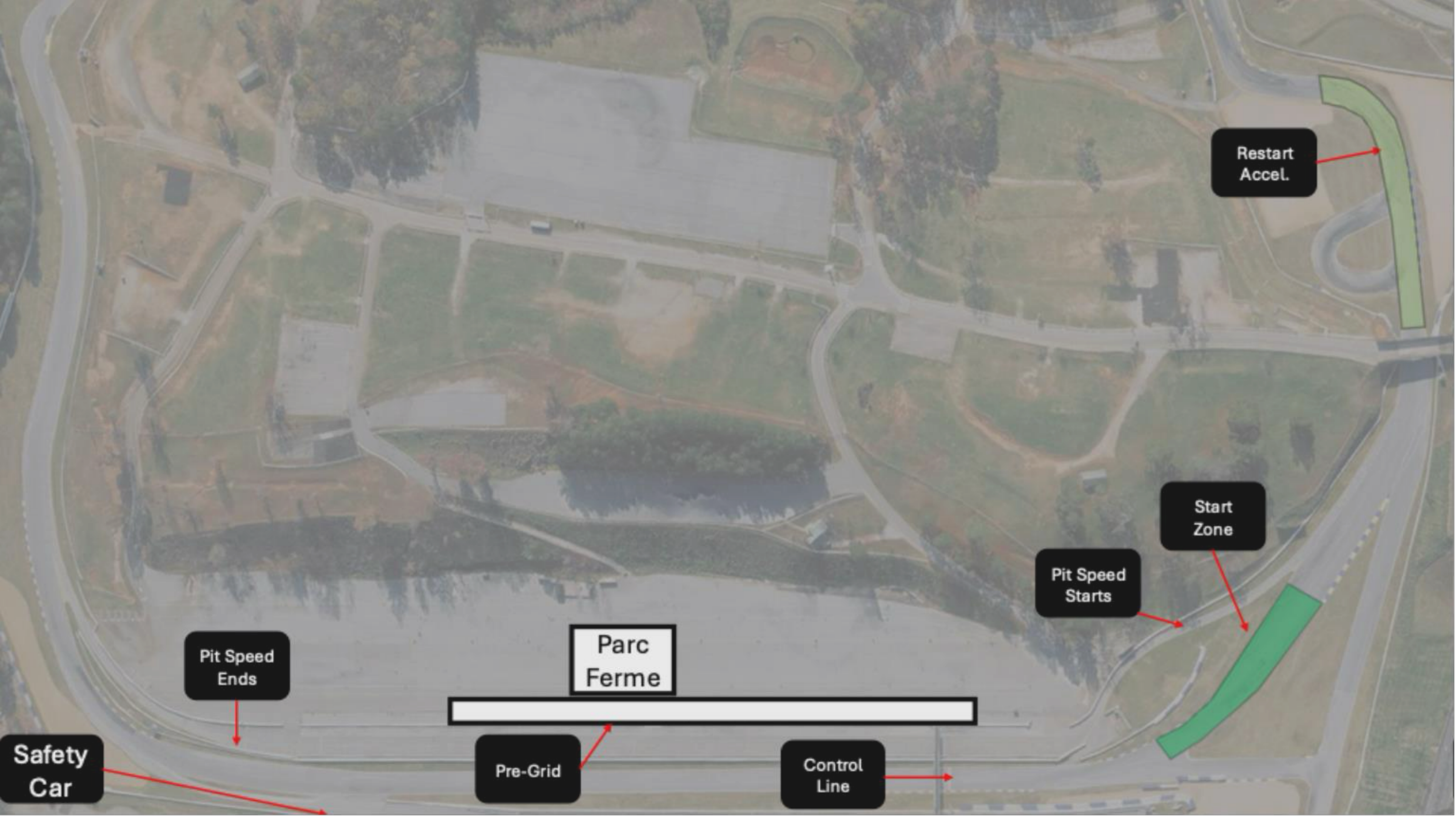
- Pair up: T8
- Maintain ~60mph until start zone (!!!!!) - Watching for contact while in formation
- Start Zone: T12 apex curbing
- Maintain formation until **Start** Line – Start line at the Starter Bridge (Single group & flag, Cayman pole sitter on pole side)



Road Atlanta Main
(Pro) Paddock

Full Course Yellow

- Leader to SC speed (60 MPH)
- *SC Driver's LEFT T1 (Support Pit Exit)*
- Pack up quickly, incidents/trucks will be flagged
- Be prepared to follow SC through Pit Lane in case of T12 clean up
- Lights out by **T9**
- Restarts – Leader maintains ~60mph & acceleration out of T10a
 - Passing on Green



Restart
Accel.

Start
Zone

Pit Speed
Starts

Parc
Ferme

Pre-Grid

Control
Line

Pit Speed
Ends

Safety
Car

Conduct

- **Race Start: Increased penalties may be applied for Lap 1 incidents**
- **Getting out of the way and lapped traffic – Stay predictable and on-line**
- **Contact:**
 - Generally, multiple cars can avoid an incident
- **Blocking:**
 - Movement in reaction to a car behind
 - Defensive or unpredictable driving may shift responsibility (turning in early/fading in brake zone)
- Properly presenting
- T4, T7, T12 - RESTRAINT

Post-Race

- All Cars to exit Pit Lane at Pit Out directly to Parc Ferme
- CLEAR THE PARC FERME AREA – Article 11.2
- Post-Race Ceremonies & Podium to occur at PSC Podium near parc ferme

Celebrating the Champions of the 2025 Porsche Sprint Challenge season!



Saturday, September 13th



7:00 PM



The Podium Club | Michelin Raceway Road Atlanta

Attire | Race Track Casual

