

General Information

Circuit:	Road Atlanta	Total Turns:	12		
Circuit Length:	2.54 Miles	Sector 1:	5,183'	Sector 2:	4,737'
Pit Lane	Length:	Transit Time (@60kph):	31.5s	Box Length:	28'
Control Line:	Start/Finish				
Beacon Side:	Driver's RIGHT @ Finish Lir				

Circuit Notes

Pit Lane	Entry:	4 wheels right of solid line	Exit:	4 wheels RIGHT of ALL lines (solid & dash)
-----------------	---------------	------------------------------	--------------	--

- Orange overlaps to stash cars (driver's right preferable)
- Clean/shake gravel off-line
- Track limit at T5 defined by the wall driver's right
- (PECNA) Cars that miss the pit entry loop when entering pit lane will be assessed a drive-through penalty
- Drivers responsible for incidents with slower cars in T4 area or T12 may be penalized more heavily than standard penalties

Pre-Race, Formation Lap(s), & Race Start

# of Formation Laps:	2	Race Start	• Start Zone: End of T11 exit curb to mid-point of T12 apex curb
No re-taking of positions after:	T7, Lap 2	Notes:	• Green flag displayed at flag stand at the Gantry (Start Line)
2x2 Formation:	T8		• [PECNA] Separate Green Flags for each group (GT3 & Cay)
			• Increased penalties may be applied for Lap 1 incidents

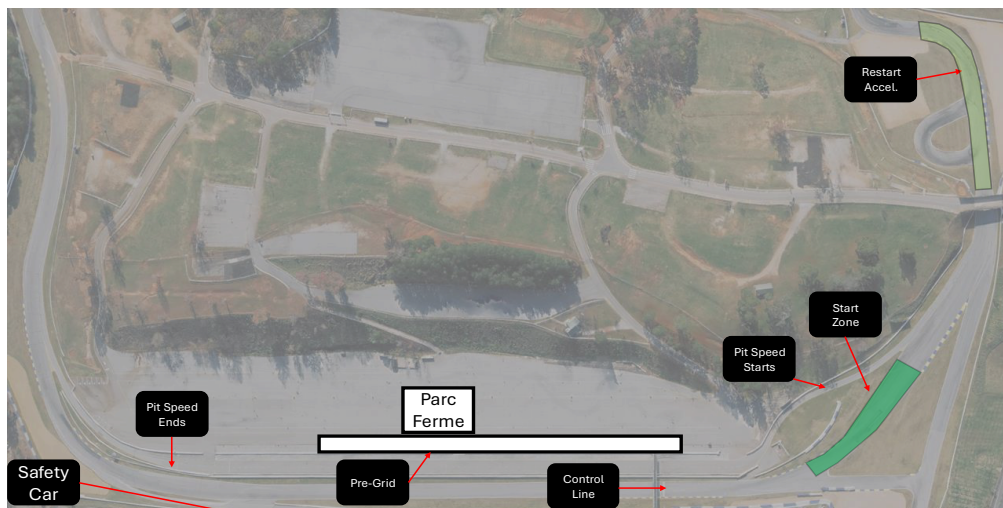
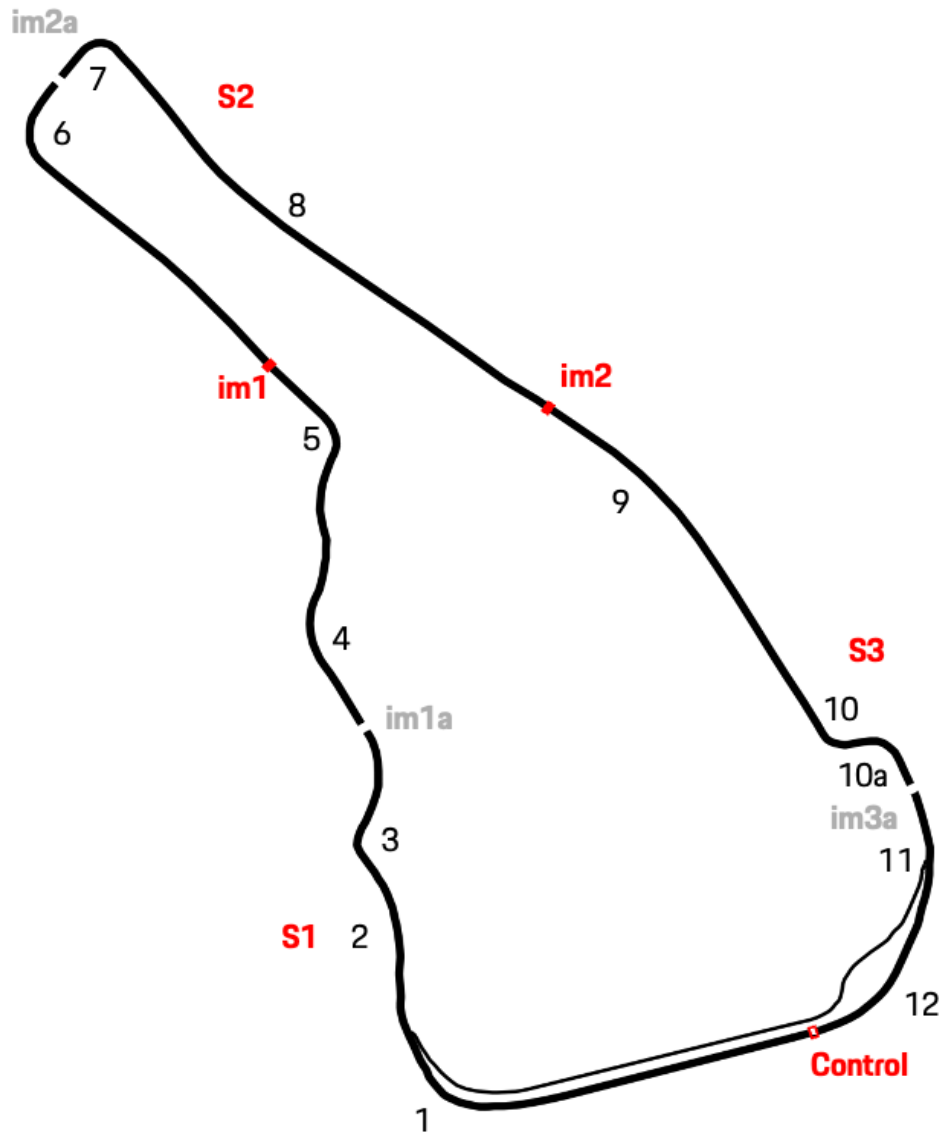
Race Neutralization

Safety Car Staging:	Driver's left in support pit lane	Red Flag Line:	Pit lane, fast lane
SC Lights out by:	T9		
Restart Acceleration:	T10a		

Misc. Notes

- PSCNA GT3 Cup Qualifying split into (2) groups, see attached line up for Group Assignment. Results from both Groups will be merged to set Race Grids
- Refueling during Test Sessions may occur in pit lane only with bowsers (closed loop)
- Pit equipment may remain up for whole weekend
- PECNA - Fueling from bottles/dump cans prohibited
- PECNA - Fueling by rig ONLY during PECNA Practice & Race
- PECNA - All over-the-wall crew must be properly attired when involved in active refueling from the overhead rigs (Practice & Race)
- PECNA -Minimum Pit Stop Time: 2 minutes 30 seconds

Event Maps
Circuit & Sectors



PSCNA GT3 Cup Qualifying Line-Up

Group A	Group B
245 Ruckus Racing	211 Topp Racing
298 Kellymoss	208 Kellymoss
252 VPX	203 Fall-Line Motorsports
246 Fall-Line Motorsports	242 JDX Racing
233 CHR	280 Kellymoss
214 CRP Racing	299 Kellymoss
255 JDX Racing	248 JDX Racing
227 JDX Racing	209 Black Sheep Racing
281 JTR Motorsports Engineering	288 Goldcrest Motorsports
231 JTR Motorsports Engineering	244 Fall-Line Motorsports
285 Goldcrest Motorsports	277 TPC Racing
297 JDX Racing	216 WRIGHT Motorsports
261 Fall-Line Motorsports	221 Topp Racing
222 GMG Racing	234 TPC Racing
226 JTR Motorsports Engineering	268 Vintage Racing Company
213 Kellymoss	251 CHR